

# SNAPE GARDENING CLUB - NEWS



ISSUE NO 33 | MARCH 2025 |

IT'S SPRING!...meteorologically speaking! But after what seems like an endless Winter I think we should take what we can! The clocks change at the very end of the month, so longer days and warmer soil are on the way, which is a win in any gardeners game. It's time to start pruning to get the best from our plants and as new Spring growth appears then feeding can begin. This months edition gives you a few technical reminders for "how-to" prune and ideas for planting in the Summer garden and on the allotment. The mice have taken residence in my alpine bed so if anyone has any tips of how to respectfully evict them, I would be grateful! Enjoy getting stuck in to jobs and having a brew whilst basking in the glow of the daffodills.....  
happy reading everyone x

## WHAT'S INSIDE THIS MONTHS ISSUE.....

PRUNING GUIDES

SNOWDROPS

JOB TO DO

PLUS SO MUCH MORE...



Send us a photo, recommend a place to visit or have a query we'll do our best to help.....

GIVE IT A TRY –

[dearworzel@gmail.com](mailto:dearworzel@gmail.com)

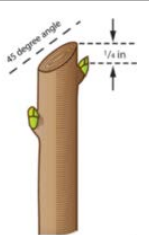
### A REMINDER OF THE PRUNING PRINCIPLES.....

As a general rule there are 4 starting points when pruning:

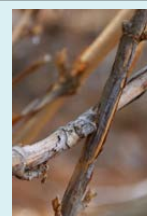
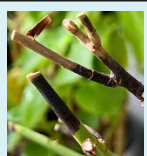
#### "DEAD DISEASED DAMAGED AND CROSSING"

Before you start have a good look at the plant. You want to assess for any parts that are dead, are holding obvious disease, any damage from Winter storms and any parts that are crossing.....all these areas need to be pruned out. If this is going to mean quite a large proportion of the plant will be removed, then consider not cutting back the healthy part of the plant as much as you would normally.

Make your pruning cuts on a 45° angle and about a 1/4" (generous 1/2 cm) from a shoot or bud.



Dead sections can be easy to spot & should be pruned out. If you are in any doubt then do the "scrape" test by gently revealing the underlying wood.....this should be green!



Clean those secateurs.....disease is easy to spread & sap will gum up the blades.

Any damaged or areas of disease should be pruned. Dispose of diseased cuttings by burning or the green bin....not your compost heap!

Crossing branches can cause a friction wound – which provides an entry point for disease – prune to a lower outward facing bud to encourage side growth.





## Do you know the answer?

a) Which country are these plants from? *Justice spicigera* (a honeysuckle type plant), *polianthes tuberosa* (a fragrant lily bulb) and *euphorbia pulcherrima* ( a Christmas specialty)

b) In what year did the horticultural society receive its royal decree to become the RHS as we know it today?

c) *Reseda lutea*, *potentilla* and *isatis tinctoria* are all plants grown historically for what purpose?

(answers on the next page)

Plant onion & shallot sets.

## MARCH JOBS.....

Prune gooseberries, red & white currants.

Sow parsnips towards the end of the month as the soil will be warmer and they require a long growing season.

Cutback cornus shrubs to around 15cms (6") this maximises the quality of the coloured stems next Winter.



Houseplant care - dust off the leaves to allow for the best photosynthesis. Water lightly and check for pests as they all come closer to the growing season.

Start off dahlia tubers in pots to give them a head start.



Cutback deciduous grasses. Feed and mulch the base after pruning.

Clump forming grasses, e.g. such as "Elijah Blue" need a "comb" through to remove dead strands.

Prune roses and give them a mulch & feed.



Divide snowdrops & winter aconites whilst they are "in the green"

Plant lilies & Summer flowering bulbs in pots and borders.

Prune late Summer flowering clematis.



These are "group 3" clematis that flower on this year's growth.



Divide hosta clumps before growth starts.

Vine Weevil become active this month, check containers for chewed off roots! Chemical and biological treatment e.g. nematodes are a good course of action.



Whip out the weeds as they appear.....reduce the workload for later in the year!



*Buddleja is a genus of over 140 species endemic to Asia, Africa and The Americas. The generic name posthumously honoured the Reverend Adam Buddle.....an English botanist.*



## **BUDDLEJA – butterfly bush**

*The beautiful butterfly bush is such a delightful shrub and is relatively undemanding in its needs and there are smaller varieties available for containers.....so this rich nectar source is really a “must-have”.*

*The most popular are the Davidii variety and are available in a selection of singular, bi & tri-colours!*



*Now is the time to prune the Davidii – If left unchecked the flowers will be produced predominantly at the top of the stems (check out the roadside buddlejas)  
Follow the pruning principles and take all stems to 2-3 sets of buds and you will have an enviable Summer display*

*Not as common, but spectacular all the same is the **buddleja alternifolia**. An informal, arching, deciduous shrub with furry silver grey foliage and distinctive lilac tassled flowers. A more delicate flower but equally as prolific and beneficial to the garden in early Summer. Prune lightly after flowering to maintain its shape & every 3-4 year's cut back some stems to the ground to maintain the best flowering habit.*



*BUT.....not to be outdone and reliably 100 year's older than the Davidii variety is the “globosa” Flowering in the late Spring/early Summer the inflorescences are golf ball shaped clusters of 20-30 flowers. Its’ robust, pest free & hardy to -15’. Pruning technique is slightly different as you prune to maintain its shape & remove any damage in early Spring before the new growth starts.*





# David's Winter Inspiration Advice.....



Sarcococca Confusa  
- sweet box

Winter can be a difficult season for gardeners. Whilst it's good to see the aconites, snowdrops and a few daffs, it will be a while before Spring flowering shrubs come into their own.

Flowers that open in Winter are a valuable asset. A selection of shrubs not only offer dainty Winter blooms, but rich fragrance too, which wafts across the garden to attract pollinators and gardeners alike!

There are different varieties of the exemplified shrubs, so choose the best one for your site, soil and aspect.

Evergreen shrubs in various shades, variegation & different forms all provide further interest.

Visit gardens throughout the season to provide you with inspiration!

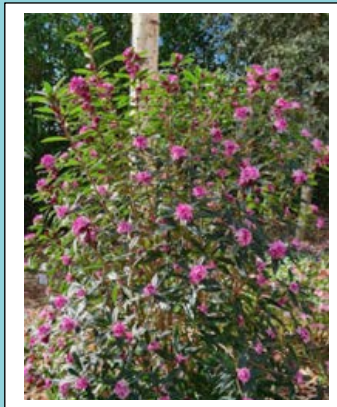
Lonicera x Purpusii -  
shrubby honeysuckle



Edgeworthia -  
paperbush



Hamamelis x Intermedia



Daphne Bholua



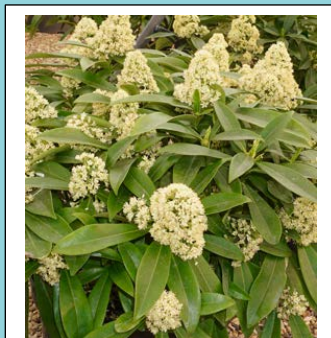
Mahonia x Media



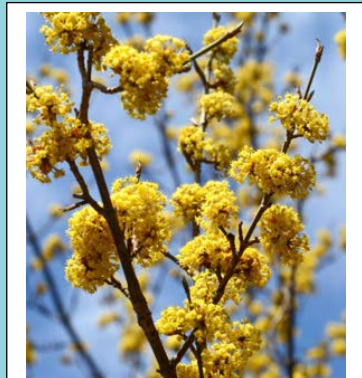
Viburnum Bodnantense  
& also Viburnum Tinus



Hamamelis



Skimmia Confusa



Cornus Mas

## *Snowdrops from Goldsborough Hall.....thank you for the photos*



Members commented....."The moss balls in the tree were planted up with snowdrops. They weren't quite in flower but thought they were a lovely idea. They were hanging in a lot of the trees around the trail."

Goldsborough Hall is open on the 23<sup>rd</sup> March for the showing of their Spring garden.....pre-booked tickets required.



### **Thorp Perrow Garden Centre: For Growing and Gifting this month!**

Week by week in March we will be adding to our stocks, filling our benches with spring bulbs and bedding, alpines, herbs, shrubs, climbers and soft fruit. Don't forget to call by to pick up your seed potatoes too. Talking of seeds, while stocks last we have packets of Kings Seeds (ornamental and edible) at a giveaway price of 99p per packet, or 6 packets for £5.

Mothering Sunday falls on 30th March this year. What could be easier than to pop along to Thorp Perrow to choose a lovely plant for Mum's garden? We will also have a range of pretty and practical gifts such as gift-boxed sets of garden tools. Or a smart new pair of gardening gloves is always acceptable! If you really can't make up your mind then a gift voucher is another option. We have our own vouchers as well as National Garden Gift Cards.

We look forward to seeing you as the weather improves and the temperature rises (well - we can but hope!)

Trevor, Ruth, Nathan and Penny xx



## **NEWS**

**DON'T FORGET - TRIPS TO  
BREEZY KNEES**

**21.6.25**

**RHS WENTWORTH**

**WOODHOUSE 19.7.25**

**ARE YOU GOING?? LET DAVID  
KNOW**

*Next meeting is Wednesday  
19<sup>th</sup> March*

*"People... Plants... Pleasure  
& Passion"  
with Don Witton*